



Malea Murphy

Muscle regeneration & interaction with connective tissue
Univ of Utah



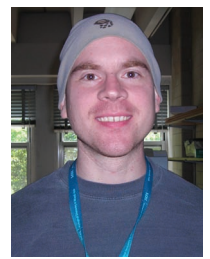
Alex Vasilyev

Kidney morphogenesis
Mass General Hospital/Harvard



Lara Marxreiter

Neural tube closure & ubiquitination
George Washington University



Frank Tulenko

Body Wall Formation in Lamprey
Wesleyan University



Ashley Siegel

Intrinsic and extrinsic factors affecting satellite cell migration
Univ of Missouri



Alberto Roselló

Molecular interactions in Proximodistal axis of the limb bud
Centro Nacional de Investigaciones Cardiovasculares



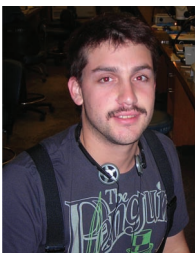
Alysha Heimberg

Evolution of Animal microRNAs and Morphological Novelty
Dartmouth College



Vincent Pasque

Univ of Cambridge
Nuclear reprogramming



Carlos Carmona-Fontaine

Social Interactions in Neural Crest Migration
Univ College London



DeDe Lyons

Evolution of the spiral cleavage program
Univ of California Berkeley



Neel Aluru

Endocrine regulation of stress response
Woods Hole Oceanographic Inst



Adele M. Doyle

Mechanical forces in stem cell biology
Georgia Inst of Technology/Emory Univ



Naveen Wijesena

Evolution of embryonic polarity
Univ of Miami



Chema Martín-Durán

Polar identities/germ layers in planarian development
Univ of Barcelona



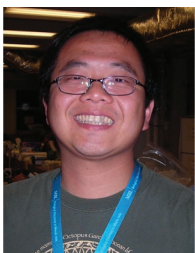
Francie Hyndman

Mammalian craniofacial development
Univ of Colorado Denver



Otger Campas

Morphogenesis & physical forces
Harvard Univ



Sheng Chen

DNA damage Checkpoint
Ludwig Inst for Cancer Research



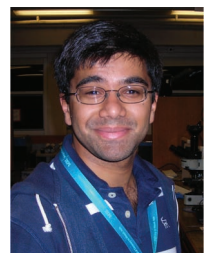
Claudiu Giurumescu

Quantitative analysis of morphogenesis
Univ California San Diego



Erin Kaltenbrun

Cardiogenesis and Notch signaling
Univ North Carolina, Chapel Hill



Prashant Sharma

Arthropod evolution and biogeography
Harvard Univ



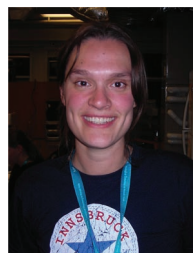
Laretta Grasso

Transcriptome analysis of development in coral
James Cook Univ



Ajay Thomas

Folic acid & neural tube defects
Univ of Colorado Denver



Katrien De Mulder

Flatworm stem cells
Univ of Ghent & Univ of Innsbruck



Antje Fischer

Development of Platyneis mesoderm
EMBL Heidelberg